

Sopchoppy Preserve



Property Features

Taking its name from the historic town that lies 3 ½ miles to the west, the 85-acre Sopchoppy Preserve is tucked away next to the 68,000-acre St. Marks Wildlife Refuge. While the property enjoys a private setting, city amenities are available in Tallahassee just 45 minutes away.

This part of Wakulla County has historically been recognized as possessing outstanding deer hunting, hence the “Buckhorn” name that locals use. Naturally, whitetail deer are plentiful as are wild turkeys – the photos don’t lie! The property is just as well-suited to be used for wildlife viewing or as a personal retreat.

Wildlife and Recreation

Sopchoppy Preserve is an affordably priced recreational / hunting property that features 30 acres of longleaf pines planted in 2018. Buffeting this area of mature hardwoods that round out the property to provide a nice mix of habitat that fosters wildlife diversity. An adjacent 42 acres are available for purchase if having an expanded footprint is important.

At a Glance:

Acreage:

85 +/- acres

Asking Price:

\$3,295 per acre

Location:

Wakulla County, Florida

Special Attributes:

- Borders St. Marks Wildlife Refuge
- Good Hunting
- Varied Habitat
- Numerous Nearby Outdoor Activities

Arnie Rogers, Licensed Real Estate Broker

Verdura Realty, LLC • 227 East 6th Avenue • Tallahassee, FL 32303

Cell: 850.491.3288 • Email: arogers@verduraproperties.com

www.VerduraProperties.com



VERDURA
REALTY, LLC

Please note that while all information is believed to be reliable, none is guaranteed.

Sopchoppy Preserve

Wildlife and Recreation *continued*

For those adventurous souls looking for goings-on beyond Sopchoppy Preserve's boundaries, there's a long list of nature-based sites and outdoor activities to choose from.

- Apalachicola National Forest (632,890 acres) – 1 minute
- Florida Trail – 1 minute
- Sopchoppy River – 6 minutes
- Ochlockonee River State Park – 10 minutes
- Gulf of Mexico – 15 minutes
- Bald Point State Park – 20 minutes
- Saint James Bay Golf Club – 20 minutes
- Carrabelle (deep sea fishing) - 30 minutes
- St. George Island – 1 hour
- Apalachicola historic district - 1 hour

At a Glance:

Acreage:

85 +/- acres

Asking Price:

\$3,295 per acre

Location:

Wakulla County, Florida

Special Attributes:

- Borders St. Marks Wildlife Refuge
- Good Hunting
- Varied Habitat
- Numerous Nearby Outdoor Activities



Arnie Rogers, Licensed Real Estate Broker

Verdura Realty, LLC • 227 East 6th Avenue • Tallahassee, FL 32303

Cell: 850.491.3288 • Email: arogers@verduraproperties.com

www.VerduraProperties.com



VERDURA
REALTY, LLC

Please note that while all information is believed to be reliable, none is guaranteed.

Sopchoppy Preserve

Land Photos



Arnie Rogers, Licensed Real Estate Broker
Verdura Realty, LLC • 227 East 6th Avenue • Tallahassee, FL 32303
Cell: 850.491.3288 • Email: arogers@verduraproperties.com
www.VerduraProperties.com



Please note that while all information is believed to be reliable, none is guaranteed.

Sopchoppy Preserve

Game Photos



Harvested buck photo was taken on a nearby property although it was photographed many times on Sopchoppy Preserve. All other game photos were taken on either Sopchoppy Preserve or owner's other property, Otter Creek, located one-half mile away.

Arnie Rogers, Licensed Real Estate Broker
Verdura Realty, LLC • 227 East 6th Avenue • Tallahassee, FL 32303
Cell: 850.491.3288 • Email: arogers@verduraproperties.com
www.VerduraProperties.com



Please note that while all information is believed to be reliable, none is guaranteed.

Sopchoppy Preserve

Location Map



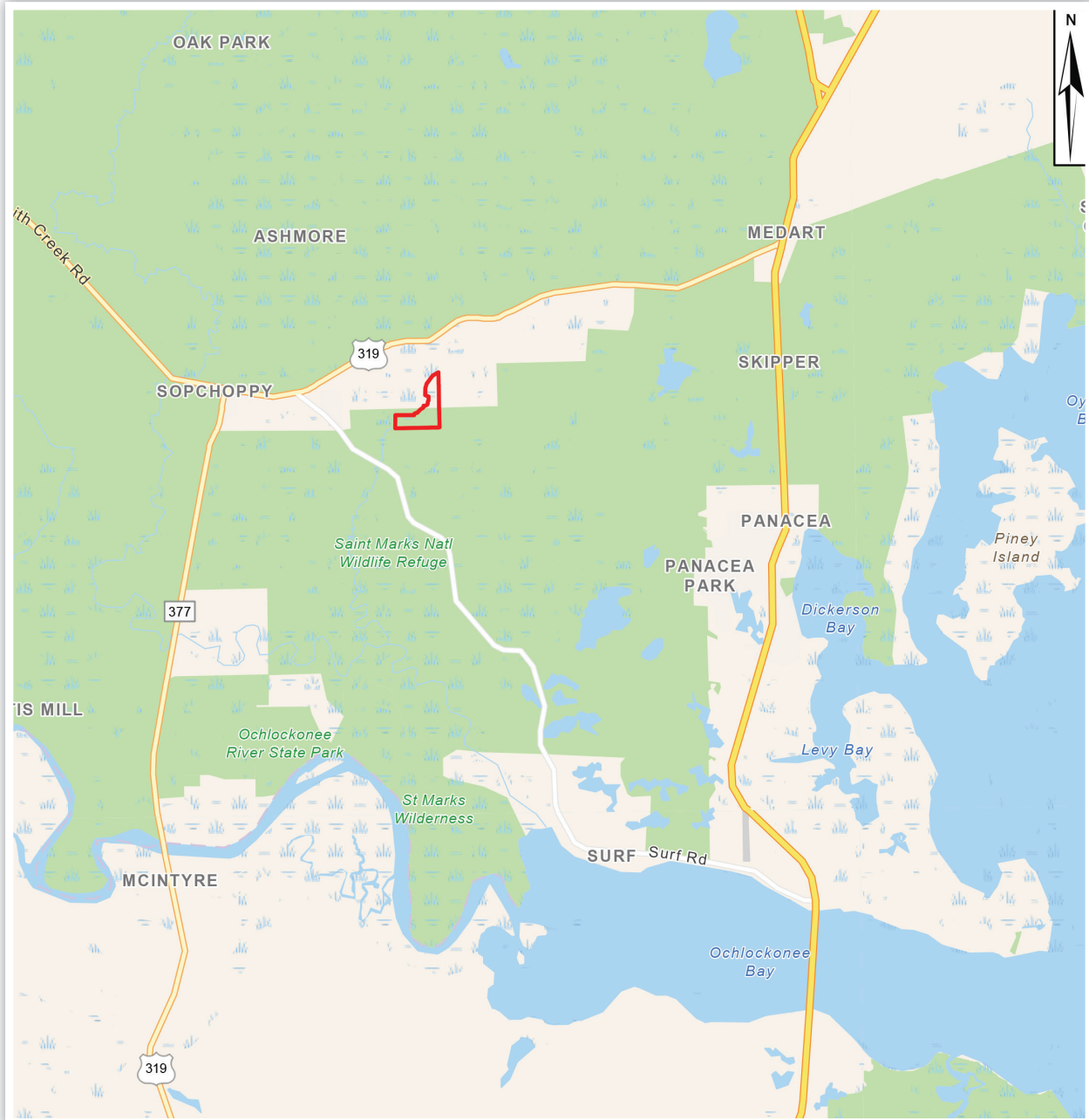
Arnie Rogers, Licensed Real Estate Broker
Verdura Realty, LLC • 227 East 6th Avenue • Tallahassee, FL 32303
Cell: 850.491.3288 • Email: arogers@verduraproperties.com
www.VerduraProperties.com



Please note that while all information is believed to be reliable, none is guaranteed.

Sopchoppy Preserve

Proximity Map



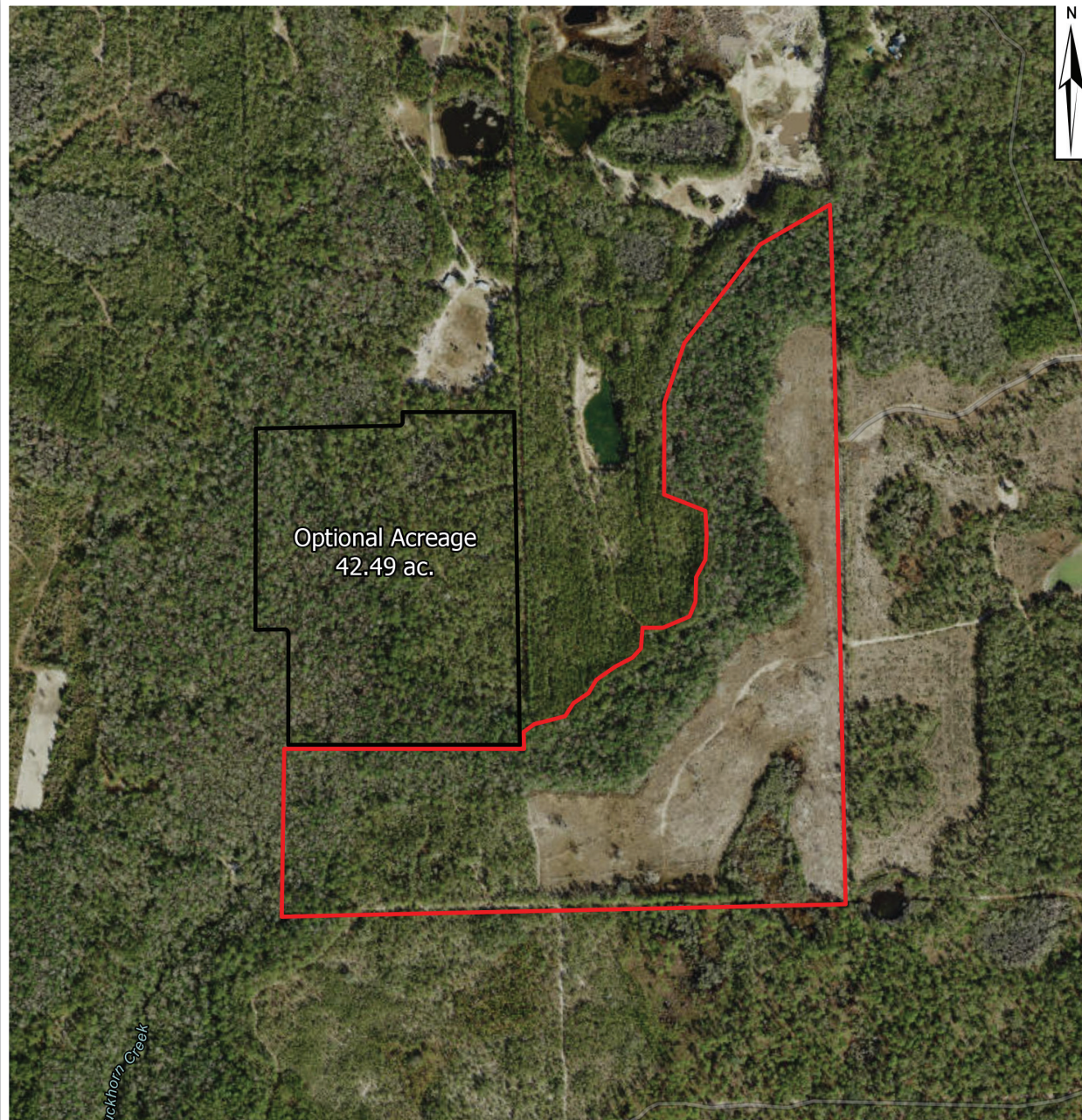
Arnie Rogers, Licensed Real Estate Broker
Verdura Realty, LLC • 227 East 6th Avenue • Tallahassee, FL 32303
Cell: 850.491.3288 • Email: arogers@verduraproperties.com
www.VerduraProperties.com



Please note that while all information is believed to be reliable, none is guaranteed.

Sopchoppy Preserve

Aerial Map



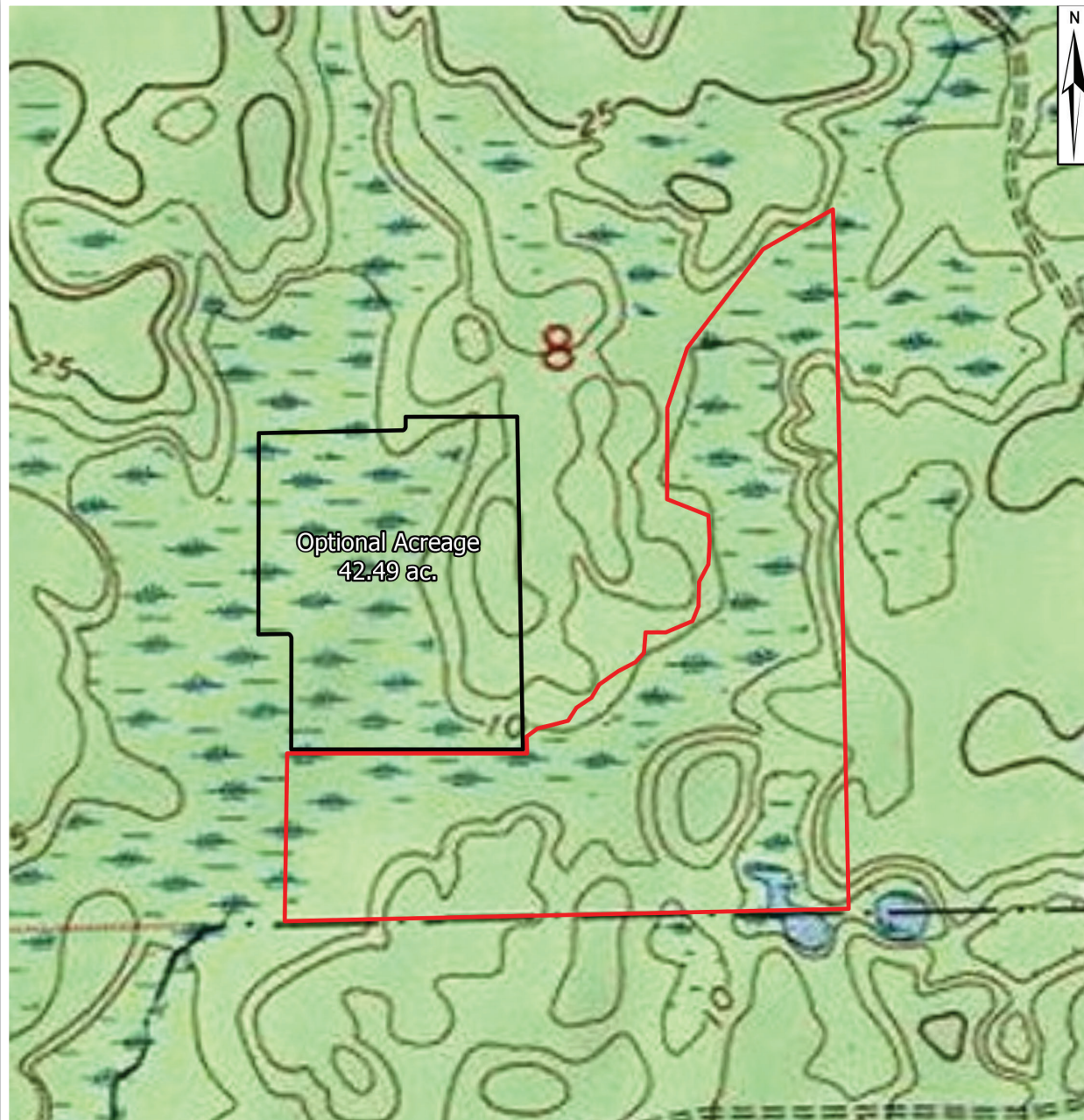
Arnie Rogers, Licensed Real Estate Broker
Verdura Realty, LLC • 227 East 6th Avenue • Tallahassee, FL 32303
Cell: 850.491.3288 • Email: arogers@verduraproperties.com
www.VerduraProperties.com



Please note that while all information is believed to be reliable, none is guaranteed.

Sopchoppy Preserve

Topo Map



Arnie Rogers, Licensed Real Estate Broker
Verdura Realty, LLC • 227 East 6th Avenue • Tallahassee, FL 32303
Cell: 850.491.3288 • Email: arogers@verduraproperties.com
www.VerduraProperties.com



Please note that while all information is believed to be reliable, none is guaranteed.